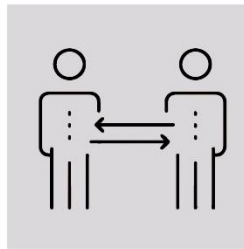


PLEASE PAY ATTENTION AT ALL TIMES!

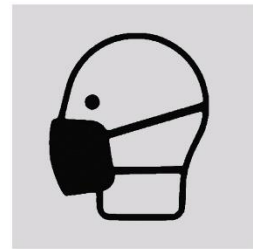
Rules are to be followed:
Distance - Hygiene - Mask



Please avoid personal contact!



Keep at least 1,5 meters distance!



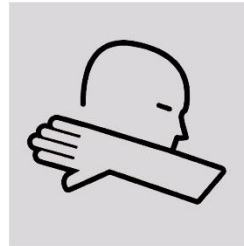
Wear mouth-nose masks!



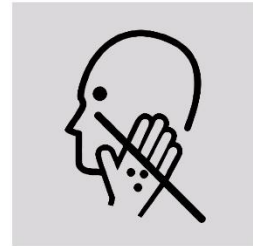
Avoid shaking hands!



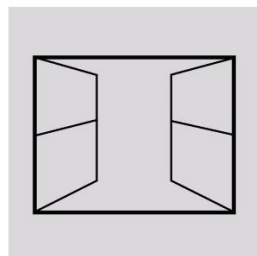
Wash hands thoroughly!



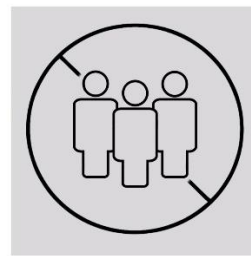
Sneeze & cough in the crook of your arm!



Keep hands out of your face!



Sufficient room ventilation!



Avoid group building!